

## **Historic, Archive Document**

Do not assume content reflects current scientific knowledge, policies, or practices.



62.91

Library  
U.S. Department Of Agriculture  
Washington, 25, D.C.



Sec. 562, P. L. & R.  
U. S. POSTAGE  
**PAID**  
Wenatchee, Wash.  
Permit No. 35

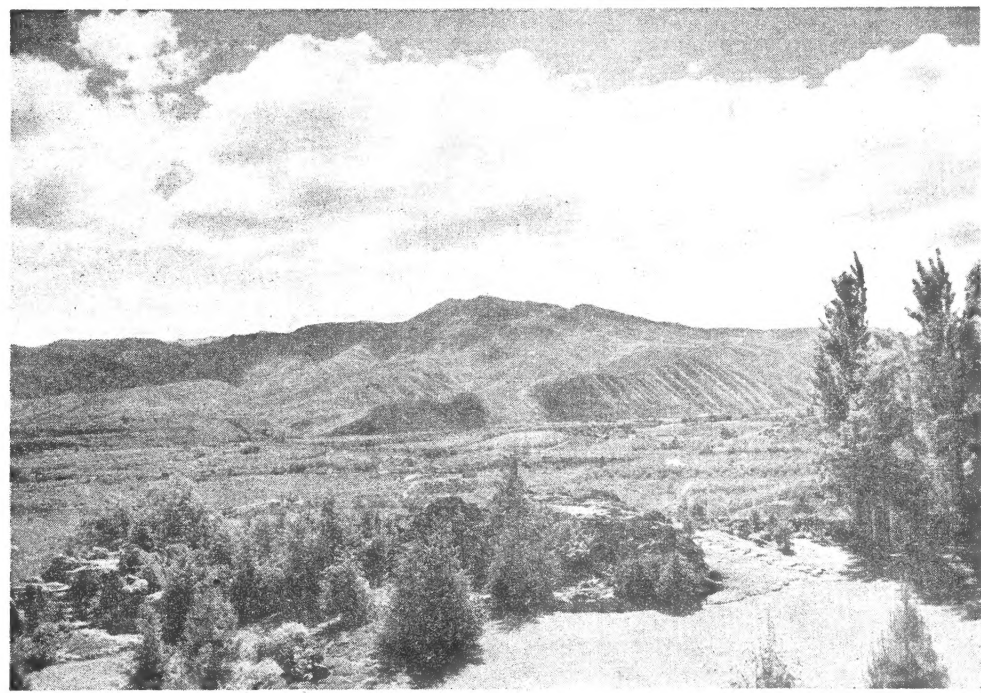
**SPRING 1947**

# MILOT-MILLS FLORISTS, CATALOG

Seeds, Plants, Shrubs, Evergreens

Cut Flowers for All Occasions

Growers of Cut Flowers, Bedding Plants, and Early Vegetable Plants



VIEW OF WENATCHEE VALLEY FROM OHME'S

# MILOT-MILLS FLORISTS

**WENATCHEE**

**BOX 16**

**WASHINGTON**

ESTABLISHED 1909

**GREENHOUSE AND GARDENS**  
Corner Okanogan and Peachy St.

**STORE**  
22 N. Wenatchee Ave.

VISIT MILOT-MILLS GREENHOUSES AND GARDENS - 85,000 SQUARE FEET OF GLASS - 4 ACRES OF GARDENS

**MILOT-MILLS EARLY MONEY PLANTS**

These Prices Include State Sales Tax

Vegetable and Berry Plants, Grapes and Rhubarb	F.O.B. WENATCHEE				POSTPAID		
	12	50	100	1000	12	50	100
ASPARAGUS ROOTS—Washington	.41	1.39	2.06		.51	1.40	2.20
CABBAGE—Early: Copenhagen, Golden Acre, Wakefield, Winnigstead	.41	1.39	2.06	18.00	.51	1.40	2.20
CABBAGE—Late—Danish Ballhead, Flat Dutch, Red Dutch	.41	1.39	2.06	18.00	.51	1.40	2.20
CAULIFLOWER—Snowball, Dry Weather	.41	1.39	2.06	20.00	.51	1.50	2.20
CELERY—Golden Self-Blanching, Utah Jumbo	.41	1.39	2.06	20.00	.51	1.50	2.20
CHIVES	.15 each				.25 each		
CUCUMBERS—Potted—Long Green, White Spine, Davis Perfect, Boston Pickling	1.03	3.61	7.21		1.20		
EGGPLANT—New York and Black Beauty	.41	1.39	2.06	20.00	.51	1.50	2.20
GROUND CHERRY—Yellow Husk	.41	1.39	2.06		.51	1.50	2.20
GRAPEVINES—Concords, Niagara, Moore's Early, Thompson Seedless, Tokay	36c ea., 3 for \$1.03				46c ea., 3 for \$1.20		
HORSERADISH ROOTS	1.03 or 10c each				1.18		
MUSKMELONS—Potted—Hearts of Gold, Hale's Best, Rocky Ford, Burrell's Gem	1.03	3.61	7.21		1.20		
ONION PLANTS—Yellow Bermudas, Crystal Wax White, Sweet Spanish White			.20	2.06			.30
ONION SETS—Yellow		26c per lb.				36c per lb.	
PARSLEY—Curley Moss		5c ea., 6 for 25c				10c ea., 3 for 25c	
Peppers, Sweet—California Wonder, World Beater, Chinese Giant, Ruby King, Pimiento	.41	1.39	2.06	20.00	.51	1.50	2.20
PEPPERS, Hot Varieties—Cayenne, Chili	.41	1.39	2.06	20.00	.51	1.50	2.20
RHUBARB ROOTS—Strawberry, Giant Mammoth		25c ea., 3 for 52c				31c ea., 3 for 67c	
SPEARMINT PLANTS—Mint		25c ea., 6 for 1.29				36c ea., 3 for 77c	
SWEET POTATOES—Nancy Hall, Yams	.41	1.39	2.06	20.00	.51	1.50	2.20
STRAWBERRIES—Everbearing: Rock Hill Imp. No. 26; Streamliner and Mt. Rainier	1.25	3.60	10.30		1.35	3.75	10.50
STRAWBERRIES—Everbearing: Mastadon, Gem and Evermore	.52	1.80	3.09		.63	1.90	3.43
STRAWBERRIES—Standards: Dorset, Marshall, Red Heart and Premier	.36	1.29	2.06		.46	1.50	2.20
TOMATOES—Bonny Best, John Baer, Earliana, Marglobe, Stokesdale, Stone, Rutgers, Ponderosa, Yellow Pear, Golden Queen, Oxheart, and Cherry	.41	1.39	2.06	20.00	.51	1.50	2.26
TOMATO PLANTS—Potted	1.29	5.15	10.30				
TOMATO PLANTS—By the flat, including flat	2.16						
TOBACCO—Big Havana, Connecticut Seed Leaf	.41	1.28	2.06		.51		
WATERMELON PLANTS—Klondike, Kleckley Sweet. Potted. Per Dozen Pots	1.03	4.12	7.75		1.23		
MUSHROOM SPAWN		41c per brick				51c per brick	
BOYSENBERRY and YOUNGBERRY	15c ea., \$1.55 per Doz.				25c ea., 12 for \$1.80		
RASPBERRIES—Indian Summer, an everbearing red raspberry	15c ea., \$1.55 per Doz.				25c ea., 12 for \$1.80		
RASPBERRIES—One Crop: Newberg, large, red fruit; Taylor, bright red and sweet	15c ea., \$1.55 per Doz.				25c ea., 12 for \$1.80		

**BEDDING PLANTS**

ALL BEDDING PLANTS DUG FROM FLATS

1 Doz. F.O.B. WENATCHEE

1 Dozen POSTPAID

AGERATUM, Dwarf—Blue; for borders	.41	.51
ASTER PLANTS: Crego Giants—Azure blue, deep rose, blue flame, crimson, pink, phlox pink, shell pink, violet, white and mixed	.41	.51
ASTER PLANTS—American Beauty, late flower variety. Azure, deep rose, lavender, peach blossom, purple, rose, shell pink, and white	.41	.51
CANNAS—Red, pink, yellow and apricot	25c each; 1 Doz., \$3.09	\$3.29
CARNATION PLANTS—Red, pink, white, salmon-yellow, and mixed	.52	.62
CELOSIA—Giant, mixed colors	.41	.51
CELOSIA—Cockscomb	.41	.51
DAHLIA ROOTS—Mixed varieties. See page 4 for named varieties	25c each; 1 Doz., \$3.09	\$3.29
DIANTHUS—Rock Garden. Pinks and mixed	.41	.51
DUSTY MILLER—Silver leaf foliage	.41	.51
FORGET-ME-NOT—Dwarf, bright blue flowers	.41	.51
GLADIOLA BULBS—Rainbow Mix. See Page 4	.67	.77
LOBELIA PLANTS—Dwarf and Trailing—Deep blue	.41	.51
LUPINS, Russel Lupin—Mixed colors	21c each; 1 Doz., \$2.06	\$2.26
MARIGOLDS: Giant Fall Flowering—Burpee's odorless foliage; Gold, rich gold; Yellow Supreme, rich lemon yellow; Orange Sunset, bright orange; Gigantea Sunset, rich orange and lemon yellow; odor, very sweet and fragrant	.52	.62
MARIGOLDS: Dwarf Varieties—Golden Ball, dwarf, double, golden orange; Royal Scott, dwarf, double, rich mahogany; Legion of Honor, dwarf, lemon yellow and red; Tagate's, miniature flower, color, gold, splendid border plant; Harmony, orange, yellow, new; Butter Ball, canary yellow, new; Pot o' Gold, dwarf, giant large brilliant orange flowers	.52	.62
NICOTIANA—Flowering Tobacco	.52	.62
NEREMBERGIA HIPPOMANICA—New purple roll. Dwarf, fine for border, rockery	.52	.62
PANSY PLANTS—Giant flowering	.77	.90
PENTSTEMON, or Beard Tongue—Blooms in bright shades of pink, rose, and red	.52	.62
PETUNIAS—Single: Peach Red, medium size, prolific bloomer; Flaming Velvet, flaming red; Burgundy, wine red; Elks Pride, rich purple; Snowstorm, white; Lace Vale, large lacy white; White Queen, large white; Luminosa, shell pink; Giant Mixed, fringed, all colors	.52	.62

THESE PRICES INCLUDE THE 3% STATE SALES TAX

<b>PETUNIAS—Dwarf Single:</b> Elk Star, purple and white; Velvet Ball, velvet red; Glow, rich pink; White Cloud, white; Rosey Morn, pink; Blue Admiral, blue; King Henry, rich velvety red.....	.52	.62
<b>PETUNIAS—California Giants:</b> Mixed, giant single blooms.....	1.03	1.20
<b>PETUNIAS—Double:</b> American Rose, all double rose; Colossal, all double shades of rose.....	1.03	1.20
<b>PHLOX DRUMMONDI, Annual Phlox—Art shades</b> .....	.41	.51
<b>PORTULACA—Mixed colors</b> .....	.41	.51
<b>SCABIOSA—Blue Ball</b> .....	.41	.51
<b>SALPIGLOSIS—Mixed colors</b> .....	.41	.51
<b>SALVIA or SCARLET SAGE—Tall or dwarf varieties</b> .....	.52	.62
<b>SNAPDRAGONS: In Separate Colors—Pure white, light shell pink, rose pink, pink, orange and gold, amber, old gold, salmon shades, red shades, terra cotta gold, yellow and copper and mixed all colors</b> .....	.41	.51
<b>STOCKS—Ten Week—Red, pink, white, rose, lavender shade, and mixed</b> .....	.52	.62
<b>SWEET ALYSSUM PLANTS—New Violet Queen, deep violet; Dwarf White</b> .....	.41	.51
<b>VERBENA—Red, white, blue, lavender, pink and mixed colors</b> .....	.52	.62
<b>VIOLAS—Blue, apricot, white and yellow</b> .....	.77	.90
<b>GIANT ZINNIAS—Canary yellow, crimson, lavender, apricot, rose, yellow, orange yellow, bright pink, pink to salmon, red, gold, old rose, light gold, white, purple scarlet, brilliant scarlet, and cerise</b> .....	.41	.51
<b>ZINNIAS—Cut and Come: New medium size fine cut flower; white, gold, scarlet, violet, pink, salmon, crimson</b> .....	.41	.51
<b>ZINNIAS—Lilliput, or button type flower. Canary Yellow, Golden Gem, Purple Gem, Scarlet Gem, White Gem, Red Riding Hood, Rose Gem, Crimson Gem, Pastel Mixture</b> .....	.41	.51

ALL PRICES SUBJECT TO CHANGE WITHOUT NOTICE.

### BUSINESS TERMS AND HOW TO ORDER

All prices in this catalog are for cash f.o.b. Wenatchee. Mail orders sent C. O. D. when not accompanied by cash. Be sure to include 3% State Sales Tax, and transportation charges.

Unless otherwise requested, your order will be sent parcel post, unless too large, then by stage or express collect. The average postage on small orders amounts to 10c to 15c; larger orders, 20c to 50c.

We reserve the right to ship orders at the proper season for planting, if ordered too early, unless shipment is demanded. Everything in the catalog cannot be shipped at once.

Any errors, or claims for refund, must be made within 24 hours of receipt of merchandise.

#### OUR GUARANTEE

While we exercise the greatest care to have all our stock run true to name, it is mutually understood and agreed to between the purchaser and ourselves that should any stock prove untrue, we shall in no case be liable for any sum greater than that originally received for such stock that may prove untrue, besides, we will not be responsible for the crop. All orders are booked only under the above conditions.

### MILOT-MILLS COMPANY, INC.

P. O. BOX 16

WENATCHEE, WASHINGTON

## HOUSE PLANTS

## BEDDING PLANTS

### OUT OF POTS

- BOSTON FERNS**—Long, straight fronds. \$1.50 to \$2.50 each.
- WHITMANI FERNS**—Feathery fronds. \$1.50 to \$2.50 each.
- ASPARAGUS, SPRENGERI and PLUMOSA FERNS**—25c to 75c each.
- SANSEVIERIA**—Long, slender, thick green leaves, white striped and mottled. Will grow in the shade or lighted room. 35c to \$1.50 each.
- BEGONIAS**—Green leaves, everblooming, pink, white or red. 25c to \$1.00 each.
- GERANIUMS**—Large plants, best indoor blooming varieties. Colors, white, salmon, red, pink, and novelty colors. 25c to 75c each.
- FUCHSIAS**—Large plants in full bloom, of many varieties.....25c to \$1.00 each  
Spring bloomers, but can be carried over from year to year.
- CACTUS and Succulent Plants**—For miniature gardens and pots. Many varieties, shapes and sizes. 15c to 35c each.  
Made-up assortment in china dish or bowl. \$1.50 to \$5.00 each.

- For window boxes, bedding, baskets, etc. If you have a window box or basket we will plant it complete, soil and plants.  
Price, 50c and \$1.00 per foot. Baskets, \$1.50 to \$2.50 each.
- BEGONIA—Tuberous Rooted.** Bright large flowers. Splendid for shady places. Well started. 35c to \$1.50.
  - BEGONIAS—Everblooming.** Pink. 25c to \$1.00 each.
  - CARNATIONS—Standards—Red, pink, light pink, white.** 25c each.
  - CASTOR BEANS—Fast growing, very decorative.** 25c each.
  - COLEUS—Bright-colored foliage; large and small leaf varieties.** 15c and 20c each.
  - DAHLIA—Dwarf, baby dahlias.** Many beautiful colors; single and double. 25c and 35c each.
  - DUSTY MILLER—Silver-grey foliage plant.** 10c, 15c, 20c.
  - FUCHSIAS—Assorted colors, fine for shady locations.** 25 to 50c each.

### GERANIUMS—Leading Varieties:

- Apple Blossom—Light pink, double.
  - Buckner—Double white.
  - Cibiell—Large, single, salmon.
  - Coy's—Red, double.
  - Lindbergh—Deep rose pink, double.
  - Mrs. Blank—Reddish purple, double.
  - Mrs. Howell—Single, pink.
  - Radio Red—Double red.
  - Scarmooch—Salmon, semi-double.
  - Salmon Hill—Single, bright salmon.
  - Single Red and Single White.
  - Ivy Geraniums—Pink.
  - Martha Washington Geraniums.
  - Pansy Geraniums.
  - Rose Geraniums—Sweet scented.
- Prices, Potted Geraniums: 2½", 20c; 2 for 35c; 3", 25c, Doz., \$2.50; 4", 35c and 50c.
- HELIOTROPE**—Large clusters of deep purple flowers; very fragrant. 25c.
  - IMPATIENT SULTANA, or Transparent Plant**—Continuous bloomer. 20c.
  - LANTANAS**—Vine habit; clusters of bright flowers in shades of orange and red, lavender. Blooms until frost. 20c each.
  - LOBELIA**—Dwarf, dark blue, and light blue, and trailing dark blue. Prices, 10c; 3 for 25c.
  - PETUNIAS, Ruffled Monsters**—Single, dark and light shades. 25c each.
  - PETUNIAS, Double Giants**—Assorted colors. 25c to 35c each.
  - PETUNIAS, Large Hybrid Singles**—Exquisite shades of purple, red, yellow and pink. 20c each.
  - RUSSEL LUPIN**—The new giant lupin comprised of many exquisite colors. Giant spikes of flowers. 20c each.
  - SNAPDRAGONS**—Pot grown. Leading varieties. Exquisite colors of white, rose, yellow, peach, red, fawn. 10c, 25c each.
  - SALVIA**—Giant spikes of scarlet red flowers. Very attractive. 10c and 20c each.
  - SWEET ALYSSUM—**  
Violet Queen—New, deep violet.  
Little Dort—Dwarf white.  
Price, 10c each.
  - VERBENAS**—Giant flowers; assorted colors of blue, pink, red and rose. 10c to 25c each.
- ### Tender Roots and Bulbs
- AMARYLLIS—Hybrid, giant flowering.**  
Each.....75c and \$1.50
  - TUBEROSES**—Single flowering. Easily grown in hot weather. Very fragrant, waxy white flowers on tall spikes. Price, 10c each.

# DAHLIAS

## Large Flowering

A splendid collection of the best for show blooms.

**Avalon**—Large light yellow.  
**Barcarolle**—Cactus, giant red.  
**Black Jack**—Cactus, maroon red.  
**Chief Kokomo**—Decorative, orange and red.  
**Chief Multnomah**—Giant, yellow and bronze.  
**Ellen Van Deveer**—Giant rose.  
**Frank Serpa**—Medium, light pink.  
**Giant pink and yellow cactus.**  
**Jane Cowell**—Giant shell pink.  
**Jean Kerr**—Large ball white.  
**Jersey Pink**—Giant shell pink.  
**Jersey Tan**—Large buff.  
**Jersey White**—Giant white.  
**La Belle Royal**—Giant red.  
**Lavender Giant**—Large lavender.  
**Le Torredor**—Giant red.  
**Livona**—Decorative, small shell pink.  
**Mary Sure**—Giant, light orange base, white tip.  
**Mendus Cactus**—Large wine red.  
**Mrs. George Boutiller**—Giant red.  
**Orondoff**—Large yellow.  
**Thomas Edison**—Large purple.  
**Violet Charm**—Cactus, violet.  
**Watching Giant**—Yellow and bronze.

All above named varieties are 50c each, \$5.00 per dozen.

## BABY OR POM POMS

**Alice**—Pom pom, red.  
**Bronze**—Pom pom, bronze.  
**Fanny Keith**—Pom pom, red with white tips.  
**oe Fetters**—Pom pom, white.  
**Mary Muir**—Pom pom, orchid.  
**Maud Adams**—Pom pom, pink.  
**Prince**—Pom pom, purple.  
**UNWIN**—Dwarf, miniature, single and double mixed, bright colors.

35c each; 3 for \$1.00

Dahlia Stakes, 4 and 5 feet. 10c each.

## CANNAS

Plant more Cannas. They are right at home in this section. Simply use a good rich soil and plenty of water. They make a beautiful and attractive bed or border, with their large leaves and heads of bright flowers. Save the root and replant year after year.

Canna Roots well started.

**President**—Finest red.  
**King Humbert**—Dark foliage, orange red flower.  
**Yellow King Humbert**—Finest yellow.  
**Hungaria**—LeFrance pink.  
**Giant Bronze**—  
**City of Portland**—Pink.  
**Apricot**—Apricot color.  
**Eureka**—White.

Price, 25c each.

## GLADIOLUS BULBS

\$1.00 per dozen (named varieties)

**Aladdin**—Salmon pink.  
**Bagdad**—Mammoth smoky.  
**Beacon**—Red, white throat.  
**Betty Co-ed**—Rose pink.  
**Chamouny**—Rose pink, silver edge.  
**Debonair**—Clear light pink.  
**Dr. F. E. Bennett**—Scarlet red.  
**Golden Chimes**—Ruffled, light yellow.  
**Maid of Orleans**—White.  
**Margaret Beaton**—White, scarlet blotch.  
**Margaret Fulton**—Salmon pink.  
**Max Reger**—Medium blue.  
**Minuet**—Best lavender.  
**Peggy Lou**—Ruffled pink.  
**Pelegrina**—Apricot pink.  
**Picardy**—Apricot pink.  
**Tip Top**—Red.  
**Vredenburg**—Pure white.

**RAINBOW MIXTURE**—Mixed.  
65c per dozen

## ANNUAL VINES and TRAILING PLANTS

### OUT OF POTS

For hanging baskets and window boxes.

**Nierembergia, or Black-eyed Susan**—Cup flowers with black eyes.  
**Parlor Ivy**—Rapid grower, with glossy, green leaves.  
**Alyssum**—White.  
**Coleus**—Trailing.  
**Ferns.**  
**Ivy Geraniums**—Trailing.  
**Lantanas**—Trailing.  
**Lobelia**—Trailing.  
**Petunias**—Balcony.  
**Verbenas**—Red, pink, blue and purple.  
**Vincas**—Green foliage or green and white foliage.  
**Wandering Jew**—Green foliage or green and white foliage.  
**Prices, 15c and 20c each.**  
**Ivy**—Hahn's new small leaf branching ivy. Each, 35c, 50c, 75c.  
**Philodendrom, or Friendship Vine**—Grows well in any home. Each, 50c and 75c.

## ANNUAL VINES

TO BE PLANTED WHERE SHADE IS DESIRED

**Scarlett O'Hara, Morning Glory**—Charming large red flowers.  
**Moon Vine**—Giant white flowers.  
**Morning Glory**—New, heavenly blue, giant blue flowers.  
**Cobea Scandens**—Or Cup and Saucer Vine. Rapid grower; purple flowers.  
**Prices: 10c each; 3 for 25c.** All out of pots.

## HARDY PERENNIALS

They last for years with occasional attention. Planted in beds along walks, drives and borders of shrubbery and in rock gardens, they make a pleasing picture. We offer the hardy, tried and true kinds that can be best grown under average conditions. Space the dwarfier kinds 12 to 15 inches apart; and the taller kinds over 2 feet in height about half the height given.

**ANCHUSIAS**—Grows 4 to 5 feet with many large blue forget-me-not flowers. 50c  
**BLEEDING HEART**—  
 Plant in shady locations. 75c  
**CARNATIONS**—Red, pink, white, rose, violet, crimson, salmon, yellow. Dozen. 50c

## HARDY CHRYSANTHEMUMS

Early bloomer—August to October

**Indianola**—Large bronze.  
**Betty Ross**—Large white.  
**Churchard**—Large lavender.  
**Hilda Bergan**—Large red and gold.  
**Mrs. Kidder**—Large yellow.  
**Crimson Splendor**—Single red.  
**Astride**—Single pink.  
**Caprice**—Medium flower in red and brown  
**Capt. Cook**—Large button, pink.  
**Reddish Purple**—Small button.  
**McKinzie**—Small button, bright yellow.  
**Hardy Chrysanthemum**—Good variety, medium size flower. Early, profuse bloomer, very double. Red, lavender and bronze.  
**Azalea Mums**—Very dwarf, yellow red, apricot and pink.

All Mum Plants, 25c each.

**COLUMBINE**—New, long-spurred, assorted colors, each 15c  
**COREOPSIS GRANDIFLORA**—Large, golden yellow, daisy-like flowers, long stemmed. Clumps, each 35c  
**DELPHINIUM**—Giant spikes of assorted colors.  
**Pacific Giant Mixed** 25c  
**Pacific Giant White** 25c

**DIANTHUS**—For Rockeries. Mixed Colors. Price 10c  
**ESTHER REED DAISY**—Large double white daisy; everbloomer. Each 50c  
**FOXGLOVE**—  
 Young plants, assorted colors. Each 15c  
**GAILLARDIA, or Blanket Flower** 25c each  
**GYPSOPHILIA or BABY BREATH**—  
 Roots, each 50c  
**HOLLYHOCKS**—  
 Young plants, pot grown. Double pink, yellow, red, white, rose. 10c  
**LILY OF THE VALLEY**—  
 Pips, each 10c; dozen \$1.00  
**PEONIES**—Red, rose, white, pink.  
 Roots, 3 to 5 eyes. Each 50c  
**PHLOX**—Shades of red, pink, salmon, white, and rose-pink. Each, 20c; Dozen \$2.00  
**PHLOX SUBULATA, Trailing**—Bright pink, light blue. Each 35c  
**POPPIES**—Oriental—  
 Giant orange-red. Clump 35c  
**PYRETHRUM or PAINTED DAISY** 50c  
**SAXATILE**—Dwarf yellow alyssum, very hardy; each, 10c; dozen \$1.00  
**SHASTA DAISY, New Alaska**—Large white 50c  
**SWEET PEAS**—Climbing, very hardy. Colors, rose, pink, red, white. 15c  
**SWEET WILLIAM**—Choice mixed. Doz. 50c

## WATER PLANTS

### FOR LILY PONDS

**Water Lillies**—Pink, rose, red, yellow and white, each \$1.50 and \$2.00  
**Water Hyacinths** 25c  
**Water Moss, bunch** 15c  
**Duck Weed** 10c  
**Gold Fish** 15c to 25c each

## PERENNIAL VINES

### FOR SPRING PLANTING

**Boston Ivy**—Clinging vines for fireplaces and stone walls. 50c and 75c  
**Honeysuckle Vine** 50c  
**Virginia Creeper** 25c  
**Wisteria**—Chinese Blue. Each \$1.50

## GIFT POTTERY

### FOR FLOWER ARRANGEMENT

Vases, jardiniere, bowls, figurines, baby booties, storks, snooty pups and cats, flat dishes with candlesticks and many other pieces of pottery both large and small.

Any one of the above arranged with flowers will make a lovely gift for birthdays, weddings, anniversaries, graduation, sweethearts, and new babies.

A lasting gift with a sentiment.

## New Creations in Pottery

From San Francisco Pottery Co., Dorothy Kendall Ceramics, Mabel C. Heyde, Corsa Costa Meso Pottery, Bonita Creations, Hull-Hayes.

## Cactus Pottery

Planted with cactus or empty. Cats, dogs, deer, elephants, Mexicans, ducks, rabbits, and small glazed pots.

35c to 75c each.

## Fancy Pots

For plants. In white, yellow and blue. Three-, four-, five- and six-inch.

## PANSIES

Pansies have always been a great specialty with us and we are justly proud of the quality and trueness to type of our strains. Pansies succeed best in rich, well-drained soil in a sunny position, and produce their finest flowers in the cool, early days of spring. Keep flowers picked during the summer, plants pinched back, and you will get a nice lot of flowers again in the fall. For earliest blooms, seed indoors. Buy our hardy plants. 75c dozen.

# ORNAMENTAL TREES

## For Shade and Beauty

Trees serve to beautify the landscape by framing the picture and directing the eye to the house and points of interest. They also provide the very necessary background against which the house stands out. They should never be planted without well considered purpose. When carefully placed their play of shadow on the lawn, across walks and drives, is very delightful.

- Birch**—Cut Leaf, Weeping, 6 to 8 feet, \$3.00 and \$5.00.
- Cherry**—Japanese double pink flowering, 4 feet, \$2.00.
- Crab**—Double, large-flowering, pink, 4 feet, \$2.00.
- Flowering Peach**—Beautiful pink flowers in abundance. 3 feet, \$1.50.
- Hawthorn**—Very ornamental, double scarlet flowers, 6 feet, \$2.50 to \$3.00.
- Locust**—Black, fast growing, very desirable for this section, 8 to 10 feet, \$2.00.
- Mountain Ash**—Clusters of red berries in fall. \$2.00 each.
- Norway Maples**, 6 to 8 feet, \$1.50 to \$2.50.
- Maple**—Soft, cut leaf, 8 to 10 feet, \$2.00 to \$3.00.
- Prunus Triboli**—Small trees covered with double rose-pink flowers. Very attractive. 4 feet. Each, \$1.50.
- Willow**—Upright. Giant catkins with pink cast. 75c to \$1.50 each.
- Willow**—Weeping Wisconsin, 6 to 8 feet, \$1.50.



## Evergreens

Most suitable for North Central Washington.

- ARBOR VITAE**—
    - Globular in shape—Dwarf, 1 to 2 feet. \$3.00 to \$5.00 each.
    - Golden—Dwarf, 10 to 20 inches, \$3.00 to \$5.00.
    - Oriental—24 to 30 inches. \$3.00 to \$5.00.
    - Pyramidal—3 to 6 feet, \$4.00 to \$6.00.
  - JUNIPERS**—
    - Virginia—\$3.00 to \$5.00 each.
  - JUNIPERS—Spreading Varieties:**
    - Pfitzer—18 to 24 inches. \$3.50.
    - Tamerisifolia—18 to 24 inches. \$3.00 to \$3.50.
    - Savine—18 to 24 inches, \$3.00.
  - PINES**—Dwarf Mugho. \$2.00 to \$3.55.
  - SPRUCE**—Colorado Blue: 3 to 4 feet, \$5.00; 5 to 7 feet, \$10.00 to \$20.00.
  - Blue Spruce**—18 inches, \$1.50 each.
  - Norway Spruce**—2 to 3 feet, \$3.00 to \$4.00.
- Plant a permanent Christmas tree. We have a fine stock of well shaped and balled Colorado Blue Spruce, blue green and deep green.
- Blue Spruce**, 3 to 4 ft. \$5.00 to \$6.00 each.
  - Blue Green**, 3 to 4 ft. \$3.00 to \$6.00 each.
  - Deep Green**, 3 to 4 ft. \$3.00 to \$5.00.

### THIS CATALOG FREE

We want everyone interested to have a copy of this book. Send in the names of any friends whom you would like to have receive a copy—and we'll gladly send them one—free.

# ROSES

Two-year-old everblooming Rose Bushes. Leading varieties for your garden. These roses are particularly hardy for this part of Washington State. Sure to bloom during their first year.

- American Beauty**—Pure rose pink, large flowers.
  - Ami Quinard**—Dark velvety red.
  - Angele Pernet**—Orange apricot.
  - Austrian Copper**—Copper.
  - Betty Uprichard**—Two-tone pink (copper and red), very fragrant.
  - Black Jack**—Maroon.
  - Christopher Stone**—Crimson scarlet, vigorous grower, fragrant.
  - Constance**—Deep yellow.
  - Countess Vandal**—Pink and gold, excellent for cutting.
  - Dame Edith Helen**—Pure glowing pink, large beautiful flowers.
  - Duchess of Athol**—Deep yellow.
  - Editor McFarland**—Solid glowing pink, excellent for cutting.
  - E. G. Hill**—Dazzling scarlet red, long perfect buds, long lasting.
  - Etoile de France**—Deep rose red.
  - Etoile de Holland**—Lovely dark red, vigorous grower, large flowers.
  - Feu J. Loymans**—Yellow.
  - Frau Karl Druschki**—Large double white, (white American Beauty), continuous bloomer.
  - Gloaming**—Pink.
  - Golden Pernet**—Gold.
  - Golden Ophelia**—Yellow and gold.
  - Hilda**—Bright pure pink.
  - K. A. Victoria**—Double snowy white, long lasting flowers.
  - Konigan Louise**—Pure double white.
  - Lady Alice Stanley**—Coral rose.
  - Lady M. Stewart**—Copper yellow.
  - Margaret McGredy**—Orange vermillion, continuous bloomer.
  - McGredy's Scarlet**—Scarlet red.
  - Mme. Butterfly**—Deep salmon pink, very dependable.
  - Mme. Caroline Testout**—Clear pink.
  - Mrs. Sam McGredy**—Scarlet orange, elegant buds and blooms.
  - National Emblem**—Popular deep red.
  - Norman Lambert**—Orange.
  - Old Gold**—Copper.
  - Ophelia**—Creamish pink.
  - President Hoover**—Yellow, red and gold, large fragrant flowers.
  - Rev. F. Page Roberts**—Yellow, red tints.
  - Snow Queen**—Large snow white flower.
  - Sunburst**—Old favorite yellow.
  - Talisman**—Bright red, gold and yellow, constant blooming.
  - Wm. Kordes**—Golden salmon.
- 75c each; \$7.50 per dozen.

## CLIMBING ROSES

- American Beauty Cl.**—Pure rose pink, large flower, free climber.
- Paul's Scarlet Cl.**—Most popular red, strong climber, very hardy.
- President Hoover Cl.**—Yellow, red and gold.
- Talisman Cl.**—Bright red, gold, yellow.
- Climbers**—Small, 75c each; Large, \$1.50 each

## Cut Flower Department

- CORSAGES**—The latest creations for dresses or in the hair. Made of flowers in season such as roses, violets, sweet peas, carnations, gardenias and orchids. Prices, \$2.50 to \$10.00.
- WEDDING FLOWERS**—Bride's bouquets made of flowers in season, mainly roses. \$5.00 and up.
- Bride's Bouquets with Showers**—\$6.00 and up.
- Bridesmaid's Bouquets**—\$3.00 to \$5.00.
- Bridesmaid's Bouquets, Colonial Bouquets**, \$3.00 to \$5.00.
- Bride's Corsages**, \$2.00 to \$5.00.

**Boutonnieres**. 35c each. Usually a white carnation or a white rose.

**WEDDING DECORATIONS**—Arrangements with large palms, latticework, baskets of flowers, candlesticks and archway. For use in home or church, ranging in price from \$15.00 to \$25.00. Call us for an estimate.

**SPECIAL OCCASIONS**—Flowers in containers for banquet. Centerpieces artistically done. Use of candles makes beautiful pieces on tables. Flowers for birthdays, anniversaries, baby and mother, at the hospital, and bon voyage. Plants and flowers make appropriate gifts at all times.

# FLOWERING SHRUBS

- ALMOND**—Pink or white, double flowering, each .....\$1.00
- ALTHEA or Rose of Sharon**—In red or pink flower. Each.....\$1.25
- AZALEA MOLLIS**—This variety we found to be quite hardy and literally covered with bloom in early spring. Colors, yellow or salmon. Very attractive. Bushes 12 to 18 inches high. Each.....\$2.00 to \$3.00
- BARBERRY**—Japanese, green foliage. Each .....75c
- BARBERRY**—Red leaf. Very attractive. Each .....\$1.00
- BUDDERIA, or Butterfly Bush**—Dark purple, light lavender and rose pink flowering. 75c to \$1.50 each.
- CRANBERRY, High Bush**—Large, decorative foliage, tall growing, covered with red berries in the fall. Each.....\$1.00
- DAPHNE**—Pink. Each .....\$1.50
- FORSYTHIA, or Golden Bell**—One of the first to bloom. Golden yellow flowers. \$1.00
- HONEYSUCKLE**—Large growing shrub covered with sweet-scented flowers. Comes in white, pink, or red. Tartarian varieties. Price .....\$1.00
- HYDRANGEA, A. B. or Hill of Snow**.....\$1.00
- HYDRANGEA, P. G.**—Showy pink flowers. Price .....\$1.00
- KERRIA, Japonica**—A valuable shrub, having golden yellow flowers, for shady locations. Price .....75c
- KOLKOWITZIA, or Beauty Bush**—Trumpet-shaped flowers are freely produced throughout the season.....\$1.00 to \$1.50
- PRIVET HEDGE**—10 to 12 ins.....10c, 15c, 25c
- PRUNUS TRIBOLI**—Very desirable shrub, profuse bloomer of large double rich pink flowers. Price .....\$1.00
- PRUNUS CISTINA**—Foliage of bright reddish purple. Very attractive for mass planting. Each .....\$1.00
- PYRACANTHA or Washington Thorn**—Glossy foliage. Large clusters of orange berries in fall and winter. Each.....\$3.50
- QUINCE JAPONICA**—Shrub producing showy scarlet flowers in April and May. Each.....\$1.00 to \$2.00
- SNOWBALL**—Large double ball-shaped snow-white flowers .....\$1.00
- SNOWBERRY**—Low graceful shrub, tiny pink flowers turning to snow-white berries in fall. Price .....75c
- SPIREA**—Anthony Waterer. Dwarf, crimson flowers. Low growing.....\$1.00
- Van Houttii**—White flowers.....75c to \$1.00
- Thunbergii**—Medium shrub, spreading branches, white. Earlier than Van Houttii. Price .....\$1.00
- Prunifolia**—Small plum-like leaves, double pure-white flowers. Price.....\$1.00
- SYRINGAS**—Mock Orange—Single waxy white flowers, very fragrant.....\$1.00
- Virginalis**—Producing many large double and single snow-white flowers. Very desirable. Price.....\$1.00
- TAMARIX**—Hispada. Silver foliage, bright pink flowers throughout the summer.
- Africana**—Dark green foliage, pink flowers before leaves. Each.....\$1.00
- WEIGELA ROSEA**—Rose-colored flowers. One of the best varieties. Each.....\$1.00
- WEIGELA, Variegated**—Pink flowers. Each .....\$1.00









## FIELD SEEDS

Not Prepaid.

These prices are all subject to market changes.

ALFALFA, LADEK—Write for Prices.

	Lb.
White Blossom Sweet Clover.....	.25
Yellow Sweet Clover.....	.25
Mammoth Red Clover—Best.....	.75
Strawberry Clover—For alkali soil.....	\$2.45
Crimson Clover.....	.29
White Dutch Clover.....	\$1.30
Alsike.....	.65
Ladino—Fine for poultry.....	\$2.45
Timothy.....	.16
Red Top.....	.37
Orchard Grass.....	.38
Kentucky Blue Grass.....	1.35
Brome Grass—Smooth.....	.35
Brome Grass—Mountain.....	.38
Sudan Grass.....	.18
Sudan Grass No. 23; Caliproved.....	.30
Seaside Creeping Bent.....	\$1.60
Astoria Bent.....	\$1.60
Winter Vetch.....	.25
Meadow Fescue.....	.54
Chewings Fescue.....	.94
Tall Meadow Oat Grass.....	.85
Perennial Rye Grass.....	.30
Reed's Canary.....	.95
Crested Wheat.....	.45
Early Fortune Millet—For grain.....	.12
Millet, Siberian—For hay.....	.16
Millet, Big German Millet—For hay.....	.16
Millet, Hog—Proso, for chickens and grain.....	.14
Rape—Dwarf Essex.....	.30
Russian Sunflower.....	.25
Sorghum—Early amber type for hay.....	.16
Sorghum Cane—For molasses.....	.16
Flax.....	.20
Kaffir Corn.....	.12
Milo Maize.....	.15
Field Peas.....	.15
Broom Corn.....	.30

## SEED CORN

Pride of the North.....	.15
Minnesota 13.....	.15
Washington Yellow Dent.....	.15
KING'S CROSS HYBRID.....	.25

## LAWN AND GARDEN FERTILIZER

### VIGORO--For Better Gardens

100-lb. Bag.....	\$4.00	10 lbs.....	.85
50-lb. Bag.....	2.50	5 lbs.....	.45
25-lb. Bag.....	1.50	1 lb.....	.10

"PEP" Lawn and Garden Fertilizer.  
Ask for prices. 50-lb. and 100-lb. bags.

FERTIL POINTS. For potted plants. Pkg. 10c	
COW MANURE, Sack.....	\$1.00
SHEEP MANURE, Sack.....	\$1.00
COMPOST SOIL, Sack.....	\$1.00
BONE MEAL, per lb.....	.7c
GARDEN GYPSUM, or Lime, a ground lime rock. Fine for old lawns, old garden spots, etc. An application along with fertilizer is very beneficial. 10 lbs. 25c; 50 lbs., \$1.03	
PEAT MOSS. Bale.....	\$5.00
PEAT MOSS. Sack.....	\$1.00
VIGORO SPREADER—V-model. Each	\$4.25



VITAMIST—Cartridge form, to be used with your garden hose for lawn fertilizing.  
30 cartridges to the box.....\$1.00

## INSECTICIDES SPRAYS

### "BLACK LEAF 40"

A Concentrated Solution of Nicotine			
1-oz. bottle.....	\$ .35	2 lbs.....	\$3.35
5-oz. bottle.....	\$1.00	5 lbs.....	\$6.90
1 lb. bottle.....	\$2.40	10 lbs.....	\$11.65
WILGROW PLANT SPRAY—½ oz.....	20c		
TRI-OGEN—Rose garden spray treatment. Small kit (makes 16 quarts). Protects 12 to 20 roses for season.....	\$1.50		
Medium kit (makes 64 quarts). Protects 50 to 80 roses for season.....	\$4.00		
EVERGREEN SPRAY—1-oz. bottle, 35c; 6-oz. bottle, \$1.15; Pint bottle, \$2.45; Quart bottles, \$4.10 each.			
GARDEN NURSERY VOLCK—4 oz.....	25c		
1 Pint.....	50c		
ORTHO GARDEN SPRAY SET.....	\$1.85		
ORTHO ROSE SPRAY SET.....	\$1.00		
EXTRACT SPRAY—1 oz., 35c; 4 oz., \$1.00; 1 Pint, \$2.75.			
CARCO VEGETABLE SPRAY—For root maggots. Half pint, 50c; Pint, 75c; Quart, \$1.25; Gallon, \$3.50.			
PEST-B-GON—Contains 20% DDT insect spray. 4 oz., 65c; Pint, \$2.00.			
BERAKO—Liquid rotenone, controls mites, aphids, thrips, rose leaf hoppers and all similar insects. One quart makes 200 gal- lons of spray. Quarts only.....	\$2.60		
EARWORMICIDE—For use against Corn ear worm. 2-oz. bottle, 35c (with dropper); 4 oz.....	35c	Pint.....	75c
GREENOL LIQUID FUNGICIDE—1 oz., 35c; 4 oz., 60c; 1 Pint, \$1.50.			
DDT SPRAY—For cow grubs. Pint, \$1.25; Gallon, \$3.00.			
ORTHO SOIL FUMIGANT—4 oz.....	35c		
1 Pint.....	\$1.00		
ORTHO ANTHOL GARDEN SPRAY.....	49c		
MAGIK MIST AEROSOL BOMB—Kills flies, mosquitoes, moths, etc. Easy to apply. Each.....	\$2.95		

## DUSTS

PARACIDE DUST—Kills cutworms. Pkg.....	25c
NICOTINE DUST—1-Lb. can.....	50c

### Durham KILL-R DUST

With 5% DDT and Pyre-  
thrins



As DEADLY to INSECTS as  
an ATOMIC BOMB

For use in the garden and in  
the house. Use it to rid your  
dog of fleas.

Price; Lb.....	60c
Is also available in liquid form. See or write us for further particulars.	
CYANO GAS—A dust. 4-oz. can, 35c; ½-lb., 50c; 1 lb.....	75c
ORTHO BOTANO GARDEN DUST— 10-oz. Duster.....	59c
TOBACCO DUST—2-lb. carton.....	50c
FLOTOX GARDEN SULPHUR—26 oz.....	35c
4 lbs.....	60c
NAPHTHALENE—For cutworms and root maggots. Lb.....	25c
ARSENATE OF LEAD—½ lb. 20c; Lb.....	35c
LIME AND SULPHUR POWDER. Lb.....	35c
FORMALDEHYDE—1-lb. tins.....	35c
BORDEAUX MIXTURE—Used principally for mildew, blight, and fungus diseases. 1 lb.....	40c
PARIS GREEN—¼-lb. carton, 25c; 1-lb. car- ton, 65c; 5-lb. carton.....	\$3.00

ARACNICIDE SOIL DUST—For control of wireworms in small root vegetables, cab- bage maggot.....	25c
END-O-PEST—Rotenone spray. 10-oz.....	65c
Extra cartridge.....	43c
PEST-B-GONE—10% DDT. 10-oz.....	60c

## BAITS

BUG-GET BAIT—Cutworm bait. Pellets. 12 oz.....	25c		
BUG-GET BAIT—Cutworm bait. Meal. 1 lb.....	25c	2 ½ lbs.....	50c
GO WEST—Cutworm bait. Lb.....	30c		
2 ½ Lbs.....	60c		
SNAROL—For cutworms. 1 Lb.....	30c		
2 ½ Lbs.....	60c		
DEATH TO MOLES—Tablet form.....	25c		
COLE'S SLUG BAIT.....	50c		
ANT POISON—Key Brand. A dust. 4 ½ oz.....	60c		
ANT-B-GON—Ant paste.....	15c		
ANT TRAPS.....	10c and 12c		
MOUSE SEED.....	15c and 25c		
ORTHO RAT BAIT—Pellets.....	25c		
ORTHO APPO—Cutworm bait.....	35c		
ORTHO RODENT DESTROYER.....	35c		
ORTHO EARWIG BAIT—2 ½ lbs.....	60c		
CROW REPELLENT—Will repel crows and pheasants. Does not poison. ½ pint, 60c; Pint, \$1.00; Quart, \$1.75.			
POISON GAS BALLS—Exterminate ground squirrels, moles, pocket gophers, prairie dogs.....	7c to 10c each		

## Tree Tanglefoot

1-lb. can.....	50c	6-oz. can.....	45c
----------------	-----	----------------	-----

## WEED KILLERS

DANDELION KILLER and WEED KILLER —With applicator.....	\$1.75		
2-4D WEED DUST—Kills dandelions and weeds. 12-oz. can.....	75c		
WEEDICIDE—Wonderful new discovery for killing weeds of all kinds. Safe to use. Price: 2 oz., 25c; 8 oz., \$1.00; Quart, \$2.75 Use Weedicide to kill weeds anywhere.			
WEED-B-GON WEED KILLER. The hor- mone weed killer. 4-oz.....	60c; Pint.....	\$2.00	
SWIFT'S 2-4D WEED KILLER—Pint can, \$2.10; Quart, \$3.85; Gallon, \$9.15.			
WEEDONE—1 Quart.....	\$2.75	Gallon.....	\$7.50

## HORMODIN POWDERS

Since different plants require different  
treatment, Hormodin Powder has been de-  
veloped in three strengths. For root growth.  
Powder No. 1. A general-purpose powder  
especially good for carnations, roses, chrys-  
anthemums, and similar types.....50c  
Powder No. 2. Designed for many of the  
woody and semi-woody types.....75c  
Powder No. 3. Designed for the more resist-  
ant species including evergreens and dor-  
mant leafless cuttings.....\$1.00  
The treatment is simple. The moistened  
stems are dipped into Hormodin Powder  
then placed in the usual propagating me-  
dium.  
TRANSPLANTONE.....25c

## ROOTONE

For dusting cuttings and bulbs before plant-  
ing to hasten root action, and for dusting the  
soil to prevent bacteria and damping off.  
Pkt.....25c 2-oz. Jar.....\$1.00

## FLORALIFE

Helps cut flowers live longer. No need to  
change water. Pkt., 10c.

(Continued on next page)

For Growing Healthier Plants  
**VITAMIN B<sub>1</sub>**  
(Pure Crystalline Powder)

and Liquid

Amazing new growth stimulant and invigorator for garden and house plants, roses, shrubs and trees. Reports indicate almost miraculous results with Vitamin B-1. Produces larger blooms and more luxurious foliage; reinvigorates root growth; restores sick and straggly plants to health; aids germination of seeds and growth of seedlings. 10c, 25c and 50c packages. In tablet and Liquid form.



**INOCULATOR PRICES**

When Ordering, Always Specify Name of Seed

**ALFALFA, ALL CLOVERS**

Size  
1 bu. each.....\$ .50  
2½ bu. each..... 1.00

**VETCH, AUSTRIAN PEAS, CANADIAN PEAS, BEANS**

Size  
1 bu. each.....\$ .50  
\*12½ bu. each..... 5.70

\*100 lb. size. Packed only for Vetch and Peas.  
\*25 bu. size. Packed only for Soy Beans, Cow Peas.

**New Garden Size NITRAGIN for Garden Peas, Beans, Sweet Peas, Lima Beans and Lupins**

Each package will inoculate any amount up to 4 lbs. seed.  
Price, each .....10c

Subject to Market as to Supply.

**Seed Disinfectants**

**IMPROVED CERESAN**

For Wheat

One pound treats two bushels of grain.  
4 oz., 30c; 1 lb., 75c; 5 lbs., \$3.25.

**SEMESAN DISINFECTANT**

Small size .....10c  
For small seeds, 2 oz.....40c; 1 lb.....\$2.35

**SEMESAN BELL**

For Potatoes, 2 oz.....30c; 1 lb.....\$1.65

**SEMESAN, JR.**

For Field and Sweet Corn, 1½ oz.....15c  
1 lb. ....75c

**GARDEN SUPPLIES**

Dazey Flower Holders.....25c to \$2.50  
Round, Painted Dahlia Stakes, 4 to 6 feet. 15c; 2 for 25c.

Bamboo Stakes—Green color. Dozen.....10c

Pot Labels, doz.....5c 100.....50c

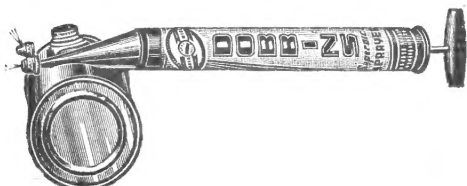
Wired Tree Labels, doz.....5c 100.....50c

Grafting Wax and Garden Tools, Lawn Rakes.

Raffia, per bunch.....10c  
Dibbles.

**Sprayers and Dusters**

For Flower and Vegetable Plants



From half-pint to 4-gallon, open head tanks.



DUST GUN—Subject to Market.

**HOTKAPS—An Individual Hothouse for Every Plant!**

**Hotkap Paper Plant Covers**

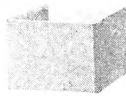
HOTKAP COVERS in any quantity,  
each .....1½c  
In packets of 25 with setter.....60c  
Postage Extra

**SAGE HOTENTS**

12 Inches High

For your tomatoes and other plants. Less than 50, 2½c each; over 50, 2c.  
Super Hotents.....3½c each; over 50.....3c each  
Postage Extra.

**DIRT BANDS**



Just the thing to start seed in before setting out in your field or garden.

1¾x1¾x2½ .....\$ .95 per 100  
2½x2½x3 ..... 1.05 per 100  
3x3x3..... 1.15 per 100  
3x3x4..... 1.20 per 100  
3x3x6..... 1.25 per 100  
4x4x4..... 1.50 per 100

Ask price for 1000 or more.

**SOIL SOAKERS**

No. 0—12 ft.....\$1.50  
No. 1—18 ft..... 1.90  
No. 2—30 ft..... 2.90

**Glass-O-Net**

For poultry houses and hotbeds. 57c sq. yd.



A Real Garden Aid

**ALL-PURPOSE HOE**

Price \$1.25

**GRAFTEX**

For grafting trees, etc. ½-lb. can, 50c; 5-lb. can \$4.25.

**TREE PAINT**

Used for painting tree wounds caused by pruning.

Pints .....30c  
Quarts .....50c  
Gallons .....\$1.00

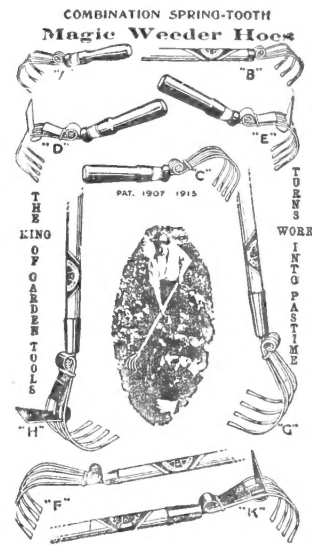
Postage Extra



**Flex-O-Glass**

Is made in 36-in. width. Per square yard, 27c to 35c.

Not Postpaid.



**WE HAVE A GOOD SUPPLY OF Cultivators and Weeders**

at Moderate Prices

The use of proper garden tools will enable you to grow a better garden with less labor and add to the enjoyment of this fascinating endeavor.

**POULTRY SUPPLIES**

**PRATT'S, LEE'S, DR. HESS' POULTRY REMEDIES**

PRATT'S LICE KILLER. (Powder).....30c  
2 lbs. ....60c

WALKO TABLETS—For the drinking water for Baby Chicks, Turkeys, Ducks and Geese. Also for older fowls.

Walko Tablets are powerfully destructive to germ life, yet perfectly safe to give little chicks in their drinking water as soon as they are out of the shell.

Sold in 50c, \$1.00, \$2.50, and \$4.00 Sizes.

POULTRY CABBAGE. Try it. Pkt.....10c

Pratt's Pik-No-Moor, for poultry cannibalism. 2 oz., 30c; ½ pt., \$1.00; 1 pt., \$1.75.

Toe Punch. For marking baby chicks.....25c

Spiral Celluloid Leg Bands. Colors: Red, Yellow, Blue, White, Green, Cerise and Black.

No. 0, Baby Chicks, 100.....35c

Per dozen.....10c

No. 1, Bantams and Growing Pullets. 100.45c

Per dozen.....10c

No. 2, Leghorns and Mediterraneans. 100.50c

Per dozen.....10c

No. 3, Reds and Rocks. 100 for.....60c

Per dozen.....10c

No. 5, Turkeys, 1-in. diameter. 100 for...\$1.10

Per dozen.....15c

Nest Eggs. Lime. Each.....5c

DR. HESS POULTRY WORM TABLETS

100 Tab. Pkgs...\$1.00 40 Tab. Pkgs. ....50c

B-K Powder, 9⅓ oz.....75c

1¾ lbs. ....\$1.50

K. O. Fly Spray. Qt.....60c

Pratt's Bag Ointment.....35c

Pratt's Disinfectant. 10-oz. bottle.....40c

Lee's Lice Killer. Qt., 60c; ½ Gal., 90c; Gal., \$1.50.

Lee's Perch Paint. ½ Pt., 85c; Pt., \$1.50; Qt., \$2.50.

Lee's Louse Powder. Lb....25c 2½ lbs....50c

Lee's Dip and Disinfectant. Qt., 60c; ½ Gal., 90c; 1 Gal., \$1.50.

BLACK LEAF 40 WORM CAPSULES—

100, \$5.00; 45, \$1.85; 1000, \$3.50.

NICOTINE WORM POWDER—4 oz., 40c;

1½ lbs., \$1.65; 3 lbs., \$3.10.

F. O. B. Wenatchee

Remember, we have a Complete Line of all kinds of Flower and Vegetable Seeds, also GRASS SEED.

Add 3% Sales Tax to all items on this page.

# PET SUPPLIES

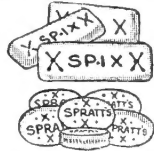


## SPRATT'S DOG FOODS

Contain plenty of MEAT. Complete, 100 per cent nourishing foods for all dogs. Ask for free 48-page Dog Book.

- SPIX DOG BISCUITS.** Bone size. Handy to feed.
- OVALS.** Small pocket biscuits. For all dogs.

Above: 18c lb.; 2 for 35c



**FIBO.** Highly nourishing granulated food. An ideal daily food for all breeds.

20c lb.

### CHARCOAL OVALS.

Black. Will keep intestines healthy. 1 lb., 18c; 2 lbs., 35c



- Cat Food with fish and milk.....12c and 35c
- Cod Liver Oil Biscuits. Lb.....18c
- Assorted Dog Biscuits. Lb.....18c
- PUPPILAC. Cream powder.....75c
- PUPPY MEAL. 12-oz. Pkt.....20c

### SPRATT'S DOG MEDICINES, ETC.

- Dog or Puppy Worm Capsules.....10c
- Cat or Kitten Worm Capsules.....10c
- Constipation Tablets.....10c
- Tonic and Condition Tablets.....10c
- Tapeworm Tablets.....25c
- Sulfur Tablets. Cooling.....50c
- Mange Liquid.....75c
- Mange Ointment.....60c
- Dog Trot. Female dogs in season.....\$1.00
- Flea Powder.....15c, 25c and 50c cans
- Black Flea Soap. Medicated.....30c
- White Dog Soap.....25c
- Dry Cleaning Powder.....30c and 50c
- Catnip Mice. For cats.....10c and 15c
- Catnip Leaves. For cats.....10c and 15c
- Cough Tablets. Box.....60c

Postage Extra

**REX HUNTER'S TASTELESS DOG POW-DERS.** Used to help prevent and relieve scratching, loose coat, loss of appetite, and to keep pets in order. May be given with their food.

Eight powders, 25c; 40 tablets, \$1.00.

Rex Hunter's Worm Capsules. For small or large dogs. Per box.....50c

Friskies—Small and large.....Lb., 15c  
9 lbs.....\$1.00

**CHAPERONE POWDER**—Keeps dogs and cats off furniture.....25c and \$1.00

- Book on Care of Cats.....35c
- Gro Pup Pellets. Lb.....14c
- Champion Worm and Hair Ball Expeller.....50c
- Pulvex Dog Soap.....25c
- Pulvex Flea Powder.....25c and 50c
- Scram—Dog Repel.....50c
- FUMEOGEN—Dog Repellent.....50c
- Fleishmann's Yeast for Dogs.....25c
- Petlick Salt Spools.....5c 10 for.....45c

Dog and Cat Sleeping Baskets and Sleeping Mats.

Dog Combs and Strippers.

Dog Collars, Harness and Leashes.

Shampoo and Cleaning Powder and Soaps.

Spratt's and Russell's Dog Remedies.

Rabbit Feeding Dishes.

# BIRD SUPPLIES



BIRD CAGES AND STANDS, SEED CUPS, BATH DISHES AND HOUSES, BRACKETS, PERCHES, SWINGS, AND CAGE SPRINGS

## SPRATT'S BIRD SEEDS and FOODS

**COD LIVER OIL NESTLING FOOD.** Vitamin health food for all birds. Pkgs., 4-oz., 15c; Aviary size bag, 5 lbs., \$1.75.



- Song Restorer. Pkt.....15c 3 oz.....29c
- Bird Biscuits.....10c and 15c
- Mixed Bird Seed in Pkt.....10c to 35c
- Roller Canary Mixture. Lb.....20c; 2 for 35c
- Indian Maw (Blue Poppy) Lb.....\$1.00
- Niger Seed. Lb.....50c
- CANARY SEED. Lb.....20c
- Bird Millet. Lb.....15c 2 for.....25c
- Hemp. Lb.....45c 2 for.....85c
- Sweet Rape. Lb.....35c
- Mixed Bird Seed. Milot-Mills. Lb.....20c  
2 lbs.....38c
- Love Bird Seed. 1 lb.....18c; 2 lbs.....35c
- Finch Seed. 1 lb.....18c 2 lbs.....35c
- Parrot Seed Mixture (Sunflower, pepper, peanuts, etc.) 1 lb.....40c
- Bird Gravel.....10c
- Bird Tonic.....10c to 25c
- Cuttle Bone, each.....10c and 20c
- Lice and Mite Powder.....10c and 25c

### French's Bird Supplies

- French's Bird Seed.....15c
- French's Song Restorer.....15c
- French's Fish Food.....10c
- French's Bird Gravel.....10c

POSTAGE EXTRA.

### PETPAK and HARTZ MOUNTAIN BIRD SUPPLIES

- Song Restorer.....15c and 29c
- Color and Pepper Food.....15c and 29c
- Moulting Food.....15c and 29c
- Song Food.....15c and 29c
- Vitamin Food.....15c and 29c
- Mixed Bird Seed, Pkts., with free biscuit.....20c
- Mixed Bird Seed, canary and rape.....35c
- Egg Food.....15c
- Bird Wash.....15c
- Oyster Shell.....10c Mite Powder.....10c
- Nestling Food.....10c Charcoal.....10c
- Gravel.....10c Cold Remedy.....10c
- Bird Jelly.....25c Bird Salve.....15c
- Cage Cleaner and Lice Destroyer.....15c
- Iron Tonic.....10c and 25c
- Bird Tonic.....10c and 25c
- Feather Pulling Food.....25c
- Bird Biscuit.....5c and 10c

Please Add Postage



Germaco  
**Hotkaps**  
New Method of  
Plant Protection

Add 3% Sales Tax to all orders from this page.

# PETAMINE

A Complete Balanced Diet to be Fed Daily Throughout the Year.

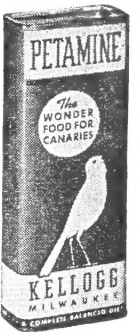
What Petamine does for Canaries: Peps them up, increases song; adds color and sheen to feathers, and keeps them in fine, vigorous condition.

Restores lost song and feathers and cures many ailments when due to faulty diets.

Makes moulting easier and faster and plumage more brilliant and colorful.

Works wonders during breeding season, produces more fertile eggs, finer, sturdier young birds.

Petamine may be used as the exclusive diet or with mixed whole seeds. Recommended for all cage birds. 25c. Net weight, five ounces. Also 65c lb.; 2 lbs., \$1.20.



## SPECIAL—Milot-Mills Birdseed Mixture

1 lb., 20c; 2 lbs., 38c. Postage extra.

## GOLDFISH, ETC.

GOLDFISH, FISH BOWLS, AQUARIUMS, CASTLES, TURTLES, FISH AND TURTLE FOODS AND FISH MOSS



Aquarium Cement, 45c per can.

Spratt's Recto Aquarium Water Rectifier—For fungus and tail rot. 3 oz.....30c

Spratt's Water Purifier—For fish bowls.....10c



## Spratt's Fish Foods and Supplies

### AQUARIUM FISH FOOD—

- Ideal goldfish food. Will not foul water.....10c
- Tropical Fish Food.....10c
- Wafer Fish Food.....10c
- Fish Moss, bunch.....10c
- Zeke Turtle Food.....10c

### NEUTRALIZER FOR OUTDOOR POOLS

It is absolutely harmless to fish, snails or vegetation and can be used when fish are spawning, as it will not injure the fish eggs or young fish.

Price, 5 lbs., 50c; 10 lbs., 95c; 25 lbs., \$2.00

## Hints on Care of Goldfish

Should the fish show signs of having fungus, or become logy, a salt bath will bring them out of it; or should the fish come to the top for air it shows there are too many fish in the bowl or aquarium.

Write us for pamphlet on Care and Feeding of Fish and Baby Turtles.

## How to Have a Good Lawn

Spade the ground as deep as possible and turn several times to see that it is thoroughly pulverized. Sheep guano or peat moss will add humus and improve the seed bed. Rake level and water thoroughly so the ground will settle. The seed bed should be allowed to stand for about two weeks, watering from time to time so the weed seeds will sprout.

Roll the ground before seeding, to prevent it from settling unevenly, and then rake the surface lightly. Sow the seeds so as to cover the ground thoroughly, and then cover it lightly with soil. Roll again so as to press the seed in firmly.

# FLOWER SEEDS---All-American Award Winners for 1946

Including new and rare kinds and varieties which received the highest awards for the year 1946. Our stock includes special and original assortments of Bodger's, Burpee's, Vaughn's, Dreer's, and Ferry-Morse flower seeds. We also put up in our own packets many varieties which we secure direct from the originators and growers in California. Should there be some special variety not in stock we will gladly order for you and save you the trouble and cost of money order.

- AGERATUM—Midget Blue. Pkt. .... 25c
- AGERATUM—Fairy Pink. Pkt. .... 15c
- ALYSSUM—Violet Queen. Pkt. .... 15c
- BEGONIAS—Vaughn's Special Mixture. 25c
- BURPEE'S MARIGOLD with Odorless Foliage, Pkt. .... 15c
- CACTUS SEED—Mixed. Pkt. .... 10c
- CHRYSANTHEMUM—Mixed. Pkt. .... 25c
- COLEUS—Rainbow Mixture .... 25c
- COLUMBINE—Special Mixture .... 10c
- COSMOS—Crimson .... 15c
- DAISY—Dwarf Bellis. For borders. .... 15c
- DELPHINIUMS—Pacific Giant, Blue Jay, Black Knight, White. Per Pkt. .... \$1.00
- EARLY YELLOW COSMOS—Pkt. .... 10c
- HOLLYHOCK—Scarlet. Pkt. .... 10c
- IRISH GREEN BELLFLOWER—Pkt. .... 25c
- MARIGOLD—Butter Ball. Pkt. .... 25c
- MARIGOLD—Golden Bedder. Pkt. .... 25c
- MARIGOLD—Mission Giant Yellowstone. 25c
- MARIGOLD—Tall, Red Firestone. Pkt. .... 25c
- MORNING GLORY—Red, White and Blue. Pkt. .... 10c and 25c
- PANSIES—Milot-Mills Special Mix. Pkt. 10c
- PETUNIA—Red, White and Blue Mixture Pkt. .... 25c
- PETUNIA—Glow. Rich, single red. Pkt. .... 10c
- PETUNIA—Admiral's Best. Small flowered blue. Pkt. .... 50c
- PETUNIA—Cream Star. Small flowered white. Pkt. .... 25c
- PETUNIA—Blue Brocade. All double blue. Pkt. .... 50c
- PETUNIA—Blushing Maid. Pkt. .... 35c
- PETUNIA HYBRIDA—Radiance. Pkt. .... 10c
- PHLOX GIGANTEA—Red Glory. Pkt. .... 25c
- SALPIGLOSSIS—New Giant. Pkg. .... 25c
- SALVIA—Indian Purple. Pkt. .... 25c
- SCABIOSA—Blue. Pkt. .... 15c
- BLUE MOON—Pkt. .... 15c
- ROSSETTE—Pkt. .... 10c
- SHASTA DAISY—Giant Double. Pkt. .... 35c
- SPIDER PLANT—True Pink. Pkt. .... 10c
- VERBENA HYBRIDA—Crimson Glow. Pkt. .... 15c
- ZINNIAS—David Burpee's. Pkt. .... 10c
- ZINNIAS—Milot-Mills California Giant Special Mixture. Pkt. .... 10c

## Shirley Poppies

(SILK OR GHOST)

These have beautiful satiny flowers of various colors, all with white centers. Foliage is hairy and finely cut.

- American Legion.** A dazzling orange-scarlet of enormous size. ¼ oz., 25c; Pkt., 10c.
- Dazzler.** All double orange scarlet. Pkt., 10c
- Double Begonia Flowered Sweet Briar.** Sweet Briar is a delightful shade of deep rose-pink. The blossoms are full double. Pkt., 10c.
- Double Begonia Flowered Mixed.** The flowers resemble the double tuberous rooted Begonias. Pkt., 10c.
- Double Shirley Ryburgh Hybrids.** Beautiful double satiny flowers in shades of white, pink and old rose with white center. Per Pkt., 10c.
- Wild Rose Shirley.** 20-in. Shades of rose and pink. Pkt., 10c.
- White Shirley.** Pkt., 10c.
- Vaughan's Special Mixture.** Pkt., 10c.

### IMPORTANT POPPY ANNOUNCEMENT

On advice from the Federal Narcotic Authorities, we are not listing the Peony Flowered, Carnation Flowered and Cardinal Type, and Tall Single and Double Annual Poppies.

## Early Flowering Spencers

- One Color. Pkt. .... 10c
- Mixed Color. Pkt. .... 10c
- Oz. .... 30c
- SWEET PEAS—Kate Smith, Bright Scarlet, Ann Batchelder, Orange Pink. Per Pkt. 10c**

### RED, WHITE AND BLUE COLLECTION

For patriotic effect sow Pearly Gates, Heavenly Blue and Scarlett O'Hara Morning Glories. One Pkt. each for 10c and 15c

Burpee's Flower and Vegetable Seeds in Original Packets.

We have a Complete Stock of All Varieties of Flower Seeds always on hand.

## THE VIGORO BEAUTY PLANS

With every 100-lb. Sack of Vigoro Fertilizer

For any small home with lot ranging from 40 feet to 100 feet. The plans show just where to plant, with suitable trees, shrubs and evergreens for this particular zone. Just what you will need to help landscape your home. Complete instructions come with the landscape plans. We will also help you.

### VISIT OUR GREENHOUSES

We have one of the largest greenhouses in the state, 85,000 square feet of space under cover devoted to the growing of Cut Flowers, House Plants, Bedding Plants and Vegetable Plants. Prices are right. Visit our big greenhouse when in Wenatchee.

Add 3% Sales Tax to all orders from this page.

## Flower Garden Suggestions

The following list will be of great assistance in sowing the seeds or placing the plants where they will be of greatest benefit and assistance for your use and enjoyment.

10c per Packet

- |  |  |
|--|--|
| <ul style="list-style-type: none"> <li>Aster—Rose Marie</li> <li>Bachelor's Button—Jubilee Gem</li> <li>California Native Flowers</li> <li>Cosmos—Sensation</li> <li>Gaillardia—Indian Chief</li> <li>Larkspur—Pink Perfection</li> <li>Marigold—Royal Scot</li> <li>Marigold—Sunset Giants</li> <li>Marigold—Ferdinand</li> <li>Marigold—Spotlight</li> <li>Nasturtium—Gem</li> <li>Snapdragon—Magic Carpet</li> <li>Zinnia—Creeping</li> <li>Zinnia—Indian Summer</li> <li>Zinnia—Pastel</li> <li>Zinnigold</li> </ul> | <ul style="list-style-type: none"> <li>Nemesia</li> <li>Pimpernel</li> <li>Portulaca</li> <li>Swan River Daisy</li> <li>Sweet Alyssum</li> <li>Verbena</li> </ul>  |
| <b>Nothing Over a Foot High</b>  |  |
| <ul style="list-style-type: none"> <li>Ageratum</li> <li>Bachelor Button—Jubilee Gem</li> <li>Blue Bells of California</li> <li>Lobelia</li> <li>Marigold (any French)</li> <li>Nasturtium (any dwarf)</li> <li>Zinnia—Tom Thumb</li> </ul>  | <ul style="list-style-type: none"> <li><b>MASS COLORING For a Riot of Color</b></li> <li>Calendula (any variety)</li> <li>Larkspur</li> <li>Marigold (any variety)</li> <li>Petunia (any Hybrid)</li> <li>Phlox Drummondii</li> <li>Portulaca</li> <li>Swan River Daisy</li> </ul>   |
| <b>NEW VARIETIES</b>   |  |
| <ul style="list-style-type: none"> <li>Be First to Plant These</li> <li>Morning Glory</li> <li>Nasturtium</li> <li>They Come Up Every Year</li> <li>Forget-Me-Not</li> <li>Foxglove</li> <li>Hollyhock</li> <li>Kudzu Vine</li> <li>Painted Daisy</li> <li>Sweet William</li> </ul>  | <ul style="list-style-type: none"> <li><b>PERENNIALS</b></li> <li>Wonder Packet</li> <li>Zinnia (giant varieties)</li> <li><b>CLIMBERS</b></li> <li>Cardinal Climber</li> <li>Cypress Vine</li> <li>Gourds</li> <li>Kudzu Vine</li> </ul>  |
| <b>ROCK GARDENING</b>  |  |
| <ul style="list-style-type: none"> <li>Try the Mixture If in Doubt</li> <li>Ageratum</li> <li>Alyssum—Gold Dust</li> <li>Arabis—Rock Cross</li> <li>Bachelor Button—Jubilee Gem</li> <li>Blue Bells of California</li> <li>Lobelia</li> <li>Nemesia</li> <li>Petunia (miniature strains)</li> <li>Portulaca</li> <li>Rock Garden Mixture</li> <li>Snapdragon—Magic Carpet</li> <li>Viola</li> <li>Zinnia—Creeping</li> <li>Zinnia—Tom Thumb</li> </ul>   | <ul style="list-style-type: none"> <li><b>BOUQUETS</b></li> <li>Just Keep on Picking</li> <li>Anchusa—Blue Bird</li> <li>Aster</li> <li>Calendula</li> <li>Cosmos</li> <li>Daisy—African</li> <li>Gaillardia</li> <li>Larkspur</li> <li>Marigold</li> <li>Nasturtium</li> <li>Petunia (except miniature)</li> <li>Phlox Drummondii</li> <li>Snapdragon</li> <li>Sweet Wivelsfield</li> <li>Verbena</li> <li>Zinnias</li> </ul> |
| <b>PARTIAL SHADE</b>   |  |
| <ul style="list-style-type: none"> <li>But a Little Sun, Please</li> <li>Bachelor Button</li> <li>Balloon Flower</li> <li>Balsam</li> <li>Canterbury Bells</li> <li>Clarkia</li> <li>English Daisy</li> <li>Forget-Me-Not</li> <li>Mignonette</li> <li>Pansy</li> <li>Sweet William</li> </ul>   | <ul style="list-style-type: none"> <li><b>FOR POOR SOIL</b></li> <li>Poor Soil Actually Preferred</li> <li>Bachelor Button</li> <li>Calliopsis</li> <li>Candytuft</li> <li>Four O'Clock</li> <li>Nasturtium</li> <li>Poppy—California</li> <li>Poppy—Shirley</li> <li>Portulaca</li> <li>Sweet Alyssum</li> </ul>  |
| <b>SCREENING</b>   |  |
| <ul style="list-style-type: none"> <li>To Hide an Unsightly Spot</li> <li>Castor Bean</li> <li>Marigold—Any African</li> <li>Cosmos</li> <li>Hollyhock</li> <li>Sunflower</li> </ul>   | <ul style="list-style-type: none"> <li><b>DROUGHT PROOF</b></li> <li>Ageratum</li> <li>Candytuft</li> <li>Coreopsis</li> <li>Sweet Alyssum</li> <li>Four O'Clock</li> <li>Petunia</li> <li>Portulaca</li> <li>Verbena</li> <li>Zinnia</li> <li>Zinnigold</li> </ul>  |

## Giant Waved and Ruffled Spencer Sweet Peas

- Ruffled. Mixed Colors. Pkt. .... 10c
- Mixed Colors. Oz. .... 40c

## Perennial Lupins

- White, Blue, Dark Rose. Pkt. .... 10c
- Russell Strain, 3½ ft. 50 seeds. .... 15c and 25c
- Vaughan's Special Mixture. Pkt. .... 25c

## Annual Lupins

- Straight Colors: White, Sky Blue. Pkt. .... 10c
- 3 for ..... 25c
- Dwarf Annual Sorts, Mixed. Pkt. .... 10c
- Tall Annual Sorts, Mixed. Pkt. .... 10c

